

小渕沖縄教育研究プログラム



1

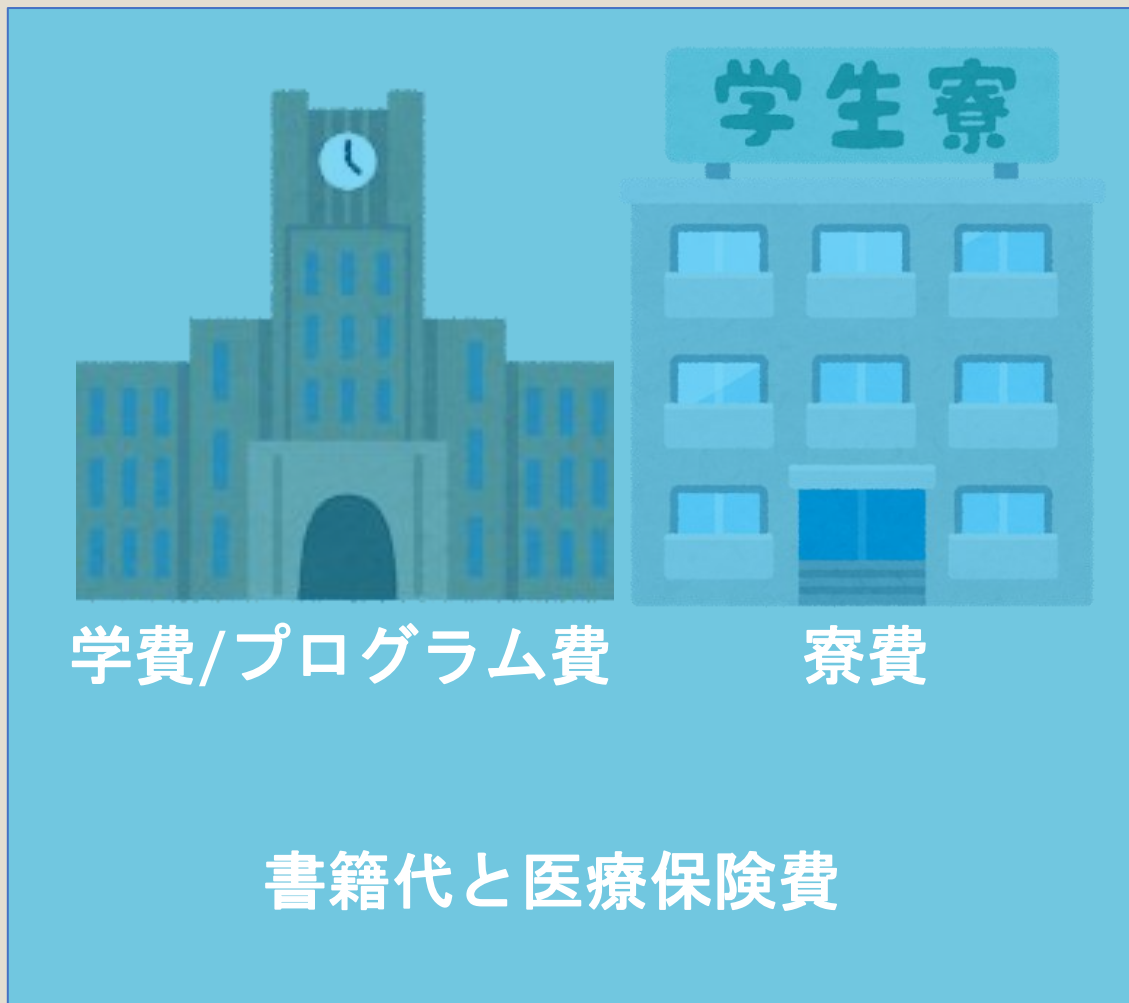
2つの奨学金制度
学位プログラム

2

アジア・太平洋リーダーシップ
プログラム (APLP)

★奨学金でカバー★

自費



学位プログラム
SCHOLAR



学位プログラム



募集締め切り

2021年12月1日

S
C
H
O
L
A
R

概要

ハワイ大学マノア校での修士又は博士課程の履修と併せて、**東西センターの教育・研究プログラムへ参加**する。東西センター及び沖縄県が奨学金として、**学費、寮費、書籍代及び健康保険費等の必要な経費を支給**する。

参加条件

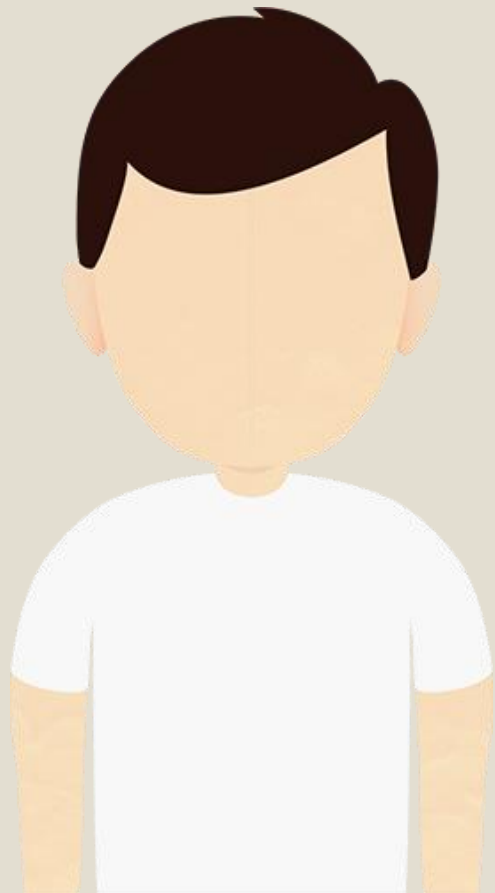
- (1) キャンパス内東西センター寮での居住
- (2) セミナー(毎週水曜日夜)や地域奉仕活動(年間45時間)への参加
- (3) 学究的条件の修了(過去に東西センターインターンシッププログラム参加/東西センター研究プロジェクト参加/学際的プログラム修了)

留学期間

2022年8月～

修士又は博士課程 — 最長24ヶ月

応募資格



年齢制限なし

+ 学科別の必要条件

- ・ **日本国籍を有し次のいずれかに該当する者。**
 - (1) 沖縄県に本籍を有する
 - (2) 沖縄県に住所を有し、留学希望年前年4月1日現在引き続き7年以上沖縄県に居住している者
- ・ **最終学歴について次の要件を満たす者**

四年制大学卒業生又は入学希望年3月末(海外の大学にあっては入学希望年6月末)卒業見込みの者で学業評定平均値(GPA)が3.0以上の者
- ・ **大学院の過程を修了後、遅滞なく沖縄県に帰還し、留学期間以上の就業義務を確実に履行することができる者**
- ・ **英語能力について次の要件を全て満たす者**
 - (1) 入学希望年前々年12月以降(2年以内)に受験した以下の3つの英語技能資格試験のいずれかのオフィシャルスコアを保持している者

テスト種類	最低基準値スコア	トータルスコア	
TOEFL	iBT 79点以上 PBT 550点以上 CBT 213点以上	120点満点 677点満点 300点満点	1点刻み
IELTS	6.5点以上	9.0満点	0.5点刻み
DUOLINGO	100点以上	160点満点	5点刻み

※但し、過去5年以内に英語圏の四年制大学を卒業した者は、スコア提出が免除される。

応募方法

(ホームページにあるリンク)

全てオンライン式

(6) 応募方法

※ハワイ大学大学院と東西センターの両方に別々に直接応募すること。

今年度から申し込む方は申し込みフォームが2022年度であることをご確認の上、手続きを進めてください。

ア ハワイ大学大学院応募(英語のみ) ⇒ [応募はこちらから](#)

※希望学科の期限も必ずご確認ください。上記よりも前に終了する場合があります。学科の締め切りが早い場合は学科の締切期限を優先してください。また学科によりオンライン申込みで受け付けていない可能性もあります。応募先のHPをご確認の上、手続きを進めてください。

イ 東西センター応募(英語のみ) ⇒ [応募はこちらから](#)

※EWCはオンライン申込みのみになります。



EAST-WEST
CENTER

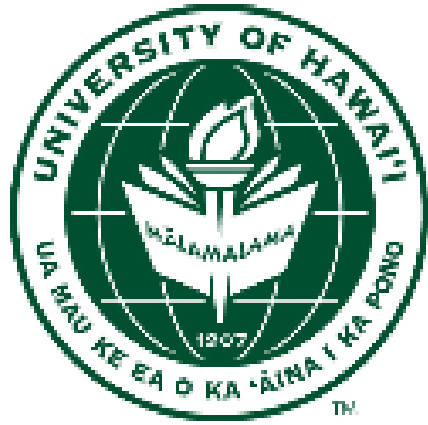


Obuchi Student Scholarship 2022

Ends on December 2, 2021

Important Application Guidelines

- Read the instructions for each item carefully before entering your information. Failing to follow the instructions correctly may result in your application being disqualified for the fellowship.
- Submittable does not log you out automatically when you exit your browser. Therefore, **it is important that you sign out from your Submittable account**, especially when you are using a public computer.



UNIVERSITY
of HAWAII®

MĀNOA

ハワイ大学の応募方法

ハワイ大学院の応募のはじめ方

① Graduate Division / Student Services

(ハワイ大学院の総合窓口)

- ・ 受験者の基本情報の入力フォーム
- ・ 証明書やその他の書類の送付先
- ・ ビザの書類や資金証明書のやりとり

基本オンラインのフォームで完結
ウェブで公開されている情報で準備完了○

② Admissions Office

(希望学科の修士/博士課程窓口)

- ・ 学科別の必要書類や条件
(Graduate Divisionよりスコア等の最低ラインが高いこともあります)
- ・ 総合窓口とは別の提出先

基本オンライン及びメールのやり取り
(オンラインフォームで受け付けていない学科も一部)
その為Graduate Divisionへの応募を開始する前
又は同時に学科への応募口の確認、
必要があれば問い合わせください。

必要書類ごとの提出先を要確認

ハワイ大学院の応募方法

(項目全てリンクで飛びます)

<https://manoa.hawaii.edu/graduate/international-students/>



GRADUATE DIVISION
UNIVERSITY OF HAWAI'I AT MĀNOA

GRADUATE PROGRAMS

ADMISSIONS ▾

CURRENT STUDENTS ▾

FINANCIAL SUPPORT ▾

FORMS



International Students

[Home](#) » International Students

This section contains information of particular interest to international graduate students. Please be advised, however, that the policies and rules contained throughout this site apply to all graduate students, including international students.

ENROLL AT THE UNIVERSITY OF
HAWAI'I AT MĀNOA NOW!

[Apply Here!](#)

- [Select a Program](#)
- [Enrollment Regulations](#)
- [Admissions Requirements](#)
- [Standardized Exams](#)
- [English Proficiency](#)
- [English Language Institute \(ELI\)](#)
- [Documentation Requirements](#)
- [Deadlines & Notification](#)
- [International Student Services](#)
- [Overseas Advising & Useful Links](#)
- [Submitting Your Application](#)

必要な書類やスコア等は
← 各学部学科ごとに決められています。
必ず応募先の募集要項をご確認ください。

① Select a Program

<https://manoa.hawaii.edu/graduate/graduate-programs/>

(学科全てリンクで飛びます)



American Studies	Communication Sciences and Disorders	Entomology	Literacy Leader	Planning Studies
Animal Sciences	Communicology	Environmental Management	Marine Biology	Political Science
Anthropology	Computer Science	Epidemiology	Mathematics	Professional Educational Practice
Architecture	Conflict Resolution	Ethnomathematics	Mechanical Engineering	Psychology
Art/Art History	Curriculum Studies	Food Science	Microbiology	Public Administration
Asian International Affairs	クリック! Dance	French	Molecular Biosciences and Bioengineering	Public Health
Asian Studies	Developmental and Reproductive Biology	Geography	Museum Studies	Religion
Astronomy	Disability and Diversity Studies	Gerontology	Music	Second Language Studies
Athletic Training	Disaster Management and Humanitarian Assistance	Hawaiian	Natural Resources and Environmental Management	Social Work
Atmospheric Sciences	Early Childhood Education	Hawaiian Studies	Neurosciences	Sociology
Botany	Earth & Planetary Sciences	Historic Preservation	Nursing	Spanish
Business Administration	East Asian Languages and Literatures	History	Nutritional Sciences	Special Education
Cell and Molecular Biology	Ecology, Evolution and Conservation Biology	International Cultural Studies	Ocean and Resources Engineering	Teaching
Chemistry	Economics	Japanese Studies	Ocean Policy	Theatre
Chinese Studies	Education	Kinesiology and Rehabilitation Science	Oceanography	Travel Industry Management
Civil and Environmental Engineering	Educational Administration	Korean Studies	Online Learning and Teaching	Tropical Medicine
Clinical Research	Educational Foundations	Landscape Architecture	Pacific Islands Studies	Tropical Plant and Soil Sciences
Clinical Psychology	Educational Psychology	Learning Design and Technology	Philippine Studies	Tropical Plant Pathology
Communication	Electrical Engineering	Library and Information Science	Philosophy	Urban and Regional Planning
Communication and Information Sciences	English	Linguistics	Physics	Zoology

Requirements for Program

例 Asian Studies

Asian Studies

Mailing Address

University of Hawai'i at Mānoa
Asian Studies Program
1890 East-West Road
Moore 416
Honolulu, HI 96822
Tel: (808) 956-6085
Fax: (808) 956-2682
Web: <https://manoa.hawaii.edu/asianstudies/>

UH Catalog:

[List of Faculty](#), [Program Overview](#), [Degree Requirements](#), [Courses Offered](#)

Application Deadlines

Fall	Spring
January 15	September 1

Individual graduate programs may have priority consideration deadlines. Applicants are advised to contact the graduate programs for such dates. Any available funding support is limited and often awarded well in advance of the application deadlines.

Applicants who apply after the application deadlines MUST consult with the graduate programs before submitting an application. Application fees are **non-refundable** and may not be used for an application submitted at a later date.

Required documents

International applicants: 100 on the IBT; lower scores above 61 will be considered on a case by case basis. Students who are admitted with TOEFL scores between 61-100 will be required to attend courses in the [English Language Institute](#), in addition to all Asian Studies Program requirements.

必要な書類やスコア等は
各学部学科ごとに決められています。
必ず応募先の募集要項をご確認ください。



Graduate Admissions

Admission to the Asian Studies Graduate Programs

We welcome individuals who are interested in studying Asia from interdisciplinary perspectives to apply to the Master of Arts in Asian Studies (MAAS), Master of Asian International Affairs (MAIA), or the Graduate Certificate (GCERT) program.

****Applicants are strongly encouraged to read carefully the School of Pacific and Asian Studies' [Application Tips for Graduate Students](#)****

Students are admitted to advanced degree programs by Graduate Division in the fall and spring semesters only. Outreach College does not fulfill the degree requirement for number of semesters "in residence." Students who wish to take course work at the graduate level during a summer session, but who have not



UHM MANOA LINKS

② Admissions Requirements (受験資格)

☆ Required Level of Study (必要レベル)

The chart below shows the minimum level of study required of applicants with degrees from certain countries or regions.

Please contact Graduate Division Student Services if your country is not listed.

COUNTRY / REGION	REQUIRED LEVEL OF STUDY
China	4-6 year bachelor's degree
Australia, Canada, South Africa	four-year bachelor's degree or honours bachelor's degree
United Kingdom or British-patterned systems	honours bachelor's degree
East European States	first university degree requiring four years or more of post-secondary study
Europe	Bologna-compliant three-year bachelor's degree
Russian Federation and former Soviet Union	four-year bakalavr or diplom/professional qualification requiring five years of post-secondary study
Bangladesh, India, Nepal and Pakistan	completed master's degree at the time of application or a four to five-year bachelor's degree such as the B. Agriculture, B. Architecture, B. Engineering, B. Technology, or MBBS degree
Central and Latin America, Mexico, Portugal, Spain	licenciado or titulo
Philippines	four-year bachelor's degree from recognized post-secondary institutions (after completion of 12 years of secondary education)

☆ International Transcripts and Academic Records (成績証明書など)

All international applicants are required to submit one transcript or academic record from each institution of higher education attended, including any study abroad or exchange programs, summer programs, and non-degree work and extension programs. Applicants may submit unofficial copies of transcripts while applying for admission. However, admitted students are required to submit official transcripts in order to enroll at UHM.

Official transcripts or academic records must be sent to Graduate Division Student Services directly from the issuing institution(s), or in sealed institutional envelopes if submitted with the application.

☆ Identification Documents (身分証明書)

As required by U.S. federal regulations, all international applicants are **required to submit a copy of their passport identification pages, or a copy of their national identification card if a passport is not available.**

☆ English Proficiency (英語技能試験)

Most applicants whose **native language is not English are required to take English Language Proficiency Exam.** We currently accept TOEFL (including TOEFL iBT Home Edition exams), IELTS (including IELTS Indicator exams) and Duolingo English Test. Scores will vary for each graduate program

☆ Financial Statement (財政能力証明書)

International applicants need to show **proof of sufficient funding to cover all educational and living expenses,** including expenses for any accompanying spouse or children. Upon admission to UHM, **only international applicants with proof of funding will receive visa documents.** The Confidential Financial Statement for International Applicants is required of most international applicants.
(財政能力証明書はHPIにあります)

+ 学科別の必要条件

② Admissions Standards(合格基準)

学業評定平均値GPAとは？

→GPAとはGrade Point Averageの省略です。成績証明書の学業成績を平均点で換算した値のことです。GPAは下記のGPA換算表に基づいて算出します。

4段階評価	5段階評価	換算値
優 (80~100点)	秀/A (90~100点)	4ポイント
良 (70~79点)	優/B (80~89点)	3ポイント
可 (60~69点)	良/C (70~79点)	2ポイント
	可/D (60~69点)	1ポイント
不可 (0~59点)	不可/F (0~59点)	0ポイント

例)

科目	成績	計算式
総合英語	優 →	$4 \times 4 = 16$
教育心理学	良 →	$3 \times 2 = 6$
教育実習	可 →	$2 \times 4 = 8$
	計	10 30

$$\text{GPA} = \frac{30}{10} = 3.0$$

計算式

$$\text{GPA} = \frac{\text{ポイント換算値} \times \text{単位数} \text{の合計}}{\text{総単位数 (全科目の単位合計)}}$$

③ Standardized Exams(共通試験)

- The Graduate Division requires the TOEFL or IELTS (Academic) tests from applicants who are not native speakers of English. Applicants are exempt from the TOEFL or IELTS if they are native speakers of English or have received within the last five years a bachelor's or advanced degree from an accredited/recognized college or university in the Australia, Canada, Ireland, New Zealand, Singapore, the United Kingdom, or the United States.
- Many graduate programs require or recommend applicants to take standardized exams(GRE, GMAT, Praxis, and MCAT). See individual program listings in the section Graduate Programs. Contact the individual graduate programs to inquire about minimum score requirements.

☆ Score Submission

Applicants should make arrangements to take the appropriate standardized exams, several months prior to the admissions application deadline. Applicants may submit unofficial scores while applying for admission. However, admitted students are required to submit official scores in order to enroll at UHM. Official GRE scores must be sent directly to Graduate Division Student Services. The Educational Testing Service (ETS) code for UHM is [4867](#). In general, test scores cannot be more than five years old.

GRE <https://www.ets.org/gre>
GMAT <https://www.mba.com/>
MCAT <https://students-residents.aamc.org/register-mcat-exam/register-mcat-exam>
Praxis <https://www.ets.org/praxis/>



④English Language Institute (ELI)

大学附属の語学学校

共通試験や英語技能試験のスコアによっては大学附属の語学学校へ入学する必要があります。生徒それぞれが各自の目的を達成できることを目標とした英語指導をしている学校です。生徒たちは語学学習だけでなく、異文化を理解できるような国際人としての素質を身につけられることにも努めています。こちらでは入学者のレベルにあった授業を受けてもらうために英語能力を測るテストを受け、点数によりクラスが分けられます。語学学校は大学の授業とは別に出席する必要があります。

Exemptions for placement test

- Native speakers of English.
- TOEFL score of 600/100 (paper/Internet) or IELTS score of 7.0 or above.
- GRE verbal score of 460 or above.
- Students who have received within the last five years a bachelor's degree or an advanced degree from an accredited/recognized college in the United States, United Kingdom, Canada (except Quebec), New Zealand, Singapore, Australia, or Ireland.



Placement Tests

Evaluation of students' English proficiency is based on TOEFL and ELI Placement Tests (ELIPT). The ELI administers the three-hour ELIPT and uses the results for ELI clearance and course placement purposes. Tests are scheduled at the beginning of each semester and summer session. **Seating is limited so students are advised to sign up immediately upon arrival on campus.** In the case of a student who has not taken the TOEFL because of extenuating circumstances, evaluation is made solely on the basis of the ELI test battery. The ELIPT measures the following:

- ability to read academic texts with understanding and reasonable speed,
- vocabulary proficiency,
- ability to understand academic lectures in English, and
- facility in written self-expression.

⑤ Documentation Requirements

IMPORTANT: In addition to meeting Graduate Division admissions standards and documentation requirements, applicants **MUST** contact their intended graduate programs for program specific admissions criteria and documentation requirements. For general information, see individual program listings in the section [Programs & Courses](#).

Applicants submit the following to Graduate Division Student Services:

- [completed Graduate Admissions Application](#)
- application fee
- one transcript for each post-secondary institution attended

In addition, certain applicants may be required to submit the following:

- [standardized exam scores](#)
- Residency Declaration Form
- official TOEFL or IELTS exam scores
- proof of sufficient funding ([Financial Statement](#).)

☆ **Application Fee(出願料)**

Application fee is \$100. No application fee waivers or deferments are granted. Application fees are NON-REFUNDABLE and may not be used for an application submitted at a later date. Applicants may pay by credit card, check or money order. Payment by check or money order must be in U.S. dollars, drawn on a U.S. bank, and made payable to the University of Hawai'i. Applicants should include their full name and date of birth on the payment.

☆ **Transcripts(成績証明書など)**

Applicants are required to submit one transcript from each post-secondary institution attended, including any study abroad or exchange programs, summer programs, and non-degree work and extension programs.

**Send transcripts to:
Graduate Division
2540 Maile Way
Spalding Hall 354
Honolulu, HI 96822**

+ 学科別の必要条件

⑥Deadlines & Notification/期日と通知について

①Graduate Division / Student Services

(ハワイ大学院の総合窓口)

②Admissions Office

(希望学科の修士/博士課程窓口)

秋学期→8/1~

締切は学科ごとに
設けている

例：Asian Studies
秋学期→~1/15まで

Graduate Division Student Services sends notification of application receipt and status by email. Applicants who do not receive a notification within 30 days of submitting their application should contact Graduate Division Student Services. Notification of final admissions decision is by mail only.

Admission may not be postponed or deferred. A newly admitted student must register during the semester of admission. Failure to register will result in the abandonment of admission status and the cancellation of registration at UHM. No refunds are granted.

⑦ International Student Services

The [International Student Services \(ISS\)](#) provides assistance to international students holding F-1 and J-1 student visas, and their dependents holding F-2 and J-2 dependent visas. ISS assistance focuses on advising students and their dependents on immigration regulations affecting their status in the U.S. and providing programs and activities that promote adjustment to U.S. and local cultures. Visit the ISS Website for information related to the following topics:

- F-1 or J-1 visa information and maintenance of visa status
- required health insurance coverage
- course load regulations
- distance education restrictions
- employment authorization
- optional practical training
- tax information for non-residents



⑧ Submitting Your Application

Admissions Login

Please read the [NOTICE TO APPLICANTS](#) and [Graduation and Persistence Rates](#).

It is highly recommended that you visit the [Admissions Office website](#) for admissions requirements and deadlines before starting the application process.

STUDENTS CURRENTLY ENROLLED IN THE UH SYSTEM

- Transferring to [UH Manoa](#), [UH West Oahu](#), or [UH Hilo](#): Please refer to the respective admissions offices web pages for application information.
- Transferring to a Community College: Fill out and submit the [Change of Home Institution form](#) instead of completing an application.

RUNNING START AND EARLY ADMISSIONS APPLICANTS: Please contact your high school counselor.

APPLICATION FEE: UH Hilo (except Summer Session and non-degree seeking), UH Manoa, UH West Oahu (except Summer Session) and non-resident applicants must make an on-line payment of this non-refundable and non-transferable application fee (by Visa, or Master Card) upon submission of this application. If you need assistance, contact the respective admissions office directly for assistance.

Returning users:
Enter your login information below. Login ID is case sensitive.
(Do not share your Login ID and PIN with other users.)

Login ID:	<input type="text"/>
PIN:	<input type="text"/>
Forgot your PIN?	<input type="button" value="Login"/>

Unauthorized access is prohibited by law in accordance with [Chapter 708, Hawaii Revised Statutes](#); all use is subject to [University of Hawaii Executive Policy E2.210](#).

**First time users:
Create a Login ID and PIN**


① アカウント登録

* Please check with your [graduate program](#) on their preferred method of document submission.

Multiple Applications

An applicant may apply to more than one graduate program at a time but may enroll in only one program initially, except in the case of official dual degrees, or in the case of a graduate degree program and a graduate certificate program.

Application Checklist

 This is a checklist of your application sections. When you enter data in a section, it will be marked as **Complete** to submit the application. (You cannot make changes to an application once it is **Complete** [here](#).)

At any point, you may click **Finish Later** to save your data. You will need your

- | | |
|--|---|
|  1. Name |  6. Residency Declaration |
|  2. Permanent Address and Phone |  7. Planned Course of Study |
|  3. Mailing Address and Phone |  8. High (Secondary) Schools |
|  4. Personal Information |  9. Colleges |
|  5. Citizenship Related Data |  10. Application Fee Information |

② 記入項目が表示

③ 情報を入力

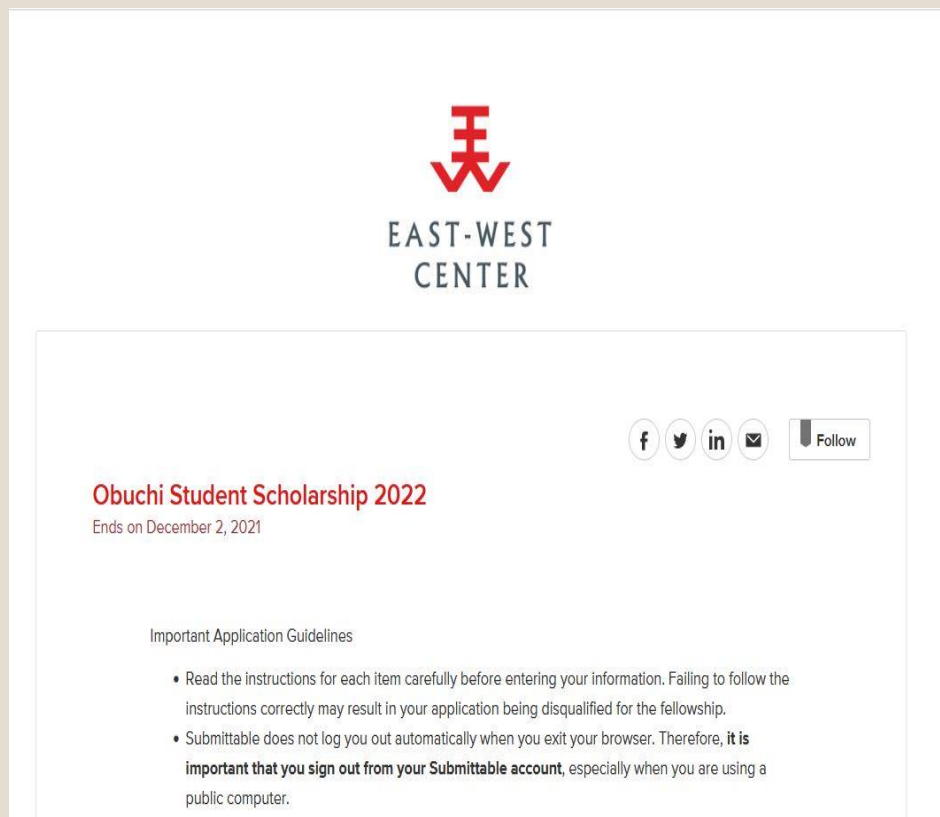


EAST-WEST CENTER
COLLABORATION • EXPERTISE • LEADERSHIP

EWCの応募方法

EWCの応募方法

(アカウント作成後、下に項目が表示)



オンライン式

(全てこちらのページでします)

- ①アカウント登録
- ②下に記入項目が表示
- ③情報を入力
- ④ファイルをアップロード

EWC Documentation Requirements

- 大学応募証明(出願料領収書)
- 大学志望動機書
- 履歴書
- 有効なパスポートのコピー
- 資金証明書
- 沖縄県在住証明等
- 大学成績証明書
- 推薦状3部
- 英語検定試験(TOEFL,IELTS,DUOLINGO)のスコア証明

※学科別必要最低スコアは異なります)

(過去5年以内に英語圏の四年制大学の卒業生は免除)

※提出される書類は原則英語となります。
原本が日本語などの場合は書類の
発行先機関又は翻訳事務所による
翻訳も用意し、原文と同封してください。

Deadlines & Notification 期日と通知について

学科の期日とは関係なくEWCは下記の締め切りとなります。

学科の方が早い場合もありますが、遅い場合はEWCの締め切りを最終日として手続きを完了しましょう

12月1日
エントリー、
エッセイ及び
書類の提出

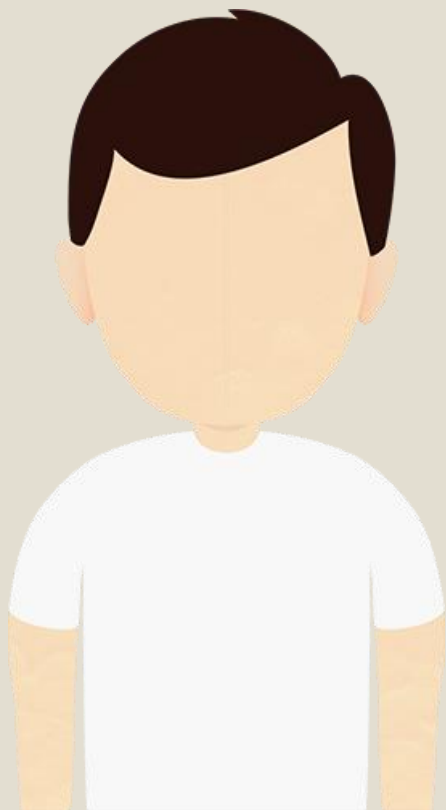
1月10日
UHの学科応募完了
書類提出
推薦状3部

Regardless of the UHM department application deadline, you are required to submit your application and required documents to your department(s) by January 10. By mid-January,

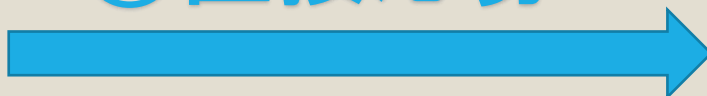
You will receive email notification by the East-West Center when your application is complete including all required supporting documents and UHM department confirmation. you should expect the notification between February 1-15.

選考・審査の流れ

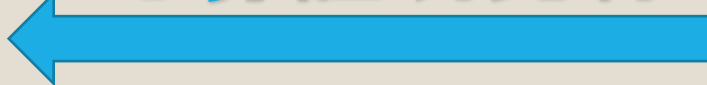
12月



①直接応募



応募証明発行



②大学応募証明を
もって直接応募

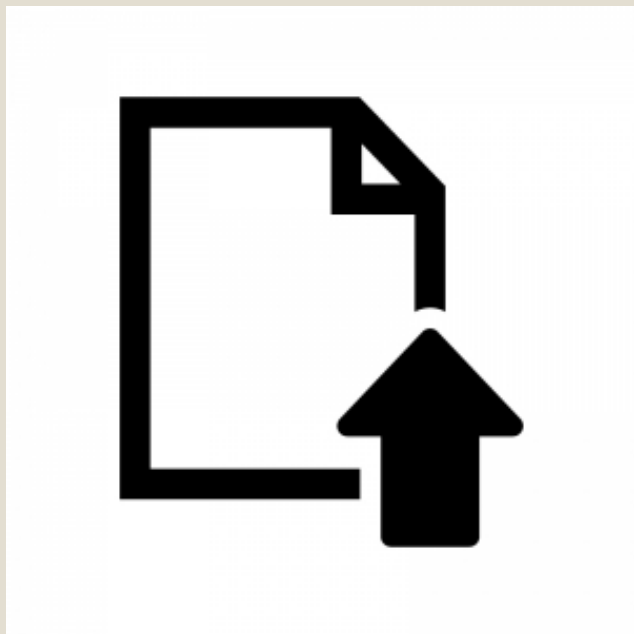


先にハワイ大学を
応募することが
ポイント！！

締切
2024/12/1

12月1日の提出物

※詳細はUHとEWCの応募ページに記載されています



☆Obuchi Student Scholarship 2022(submittable)

<https://eastwestcenter.submittable.com/submit/199561/obuchi-student-scholarship-2022>

☆Permanent domicile in Okinawa or certificate of residence for Okinawa
(沖縄県在住証明書)

☆CV/Resume (履歴書/英語)

☆Passport Bio Page (有効なパスポートのコピー)

☆Graduate Program Statement of Objectives Form
大学志望動機書 (学科別)

☆資金証明書

☆Proof of UH application submission 大学応募証明

For documents that are required to be mailed to East-West Center, please use the following address:

Award Services Office/Obuchi Student Scholarship
East-West Center
1601 East-West Road
Honolulu, Hawaii 96848-1601 USA

For TOEFL test results, please use EWC institution code: **4868**

Obuchi Student Scholarship 2022(submittable)

<https://eastwestcenter.submittable.com/submit/199561/obuchi-student-scholarship-2022>

入力項目にはエッセイ問題が6つあります。(～250字程度)

Essay #1: Your long-range goals

Essay #2: Reasons for applying to the East-West Center

Essay #3: Brief biography

Essay #4: Community service activities

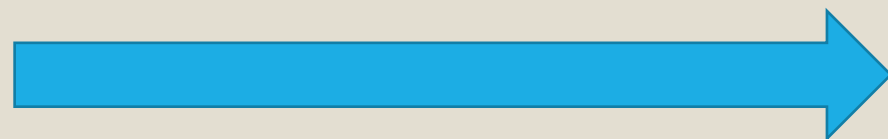
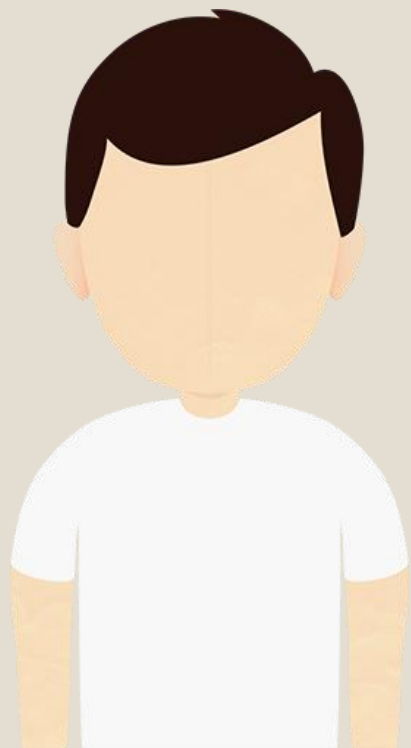
Essay #5: Intercultural learning environment

Essay #6: Contribution to Okinawa



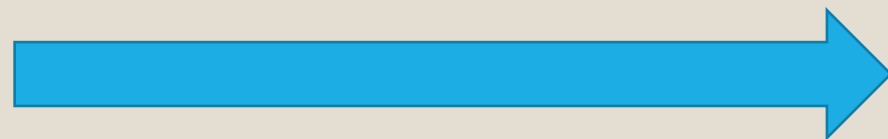
選考・審査の流れ

1月



必要書類等を
それぞれに提出

締切 2025/01/10



EAST-WEST
CENTER

学科の期日とは関係なくEWCは上記の締め切りとなります。
学科の方が早い場合もありますが、遅い場合はEWCの締め切りを最終日として手続きを完了しましょう

1月10日の提出物

Official transcript 大学成績証明書

Official or certified degree certificate

THREE reference letters 推薦状3部→3人必要

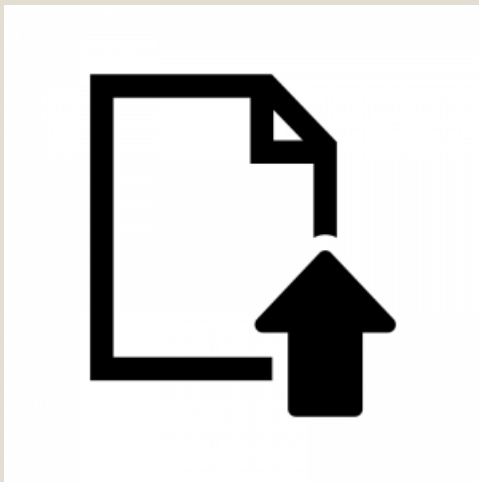
TOEFLもしくはIELTSのスコア証明

(※学科別必要最低スコアは異なります)

(過去5年以内に英語圏の四年制大学の卒業生は免除)

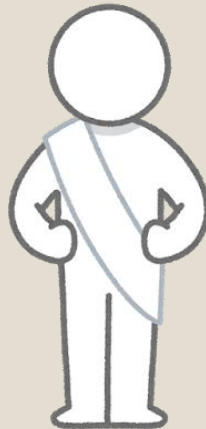
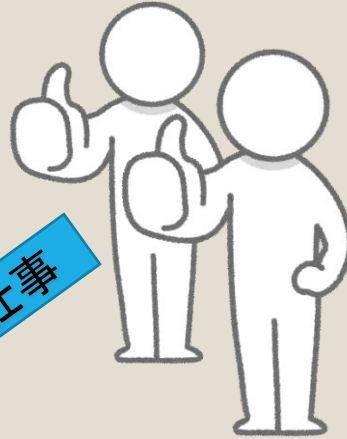
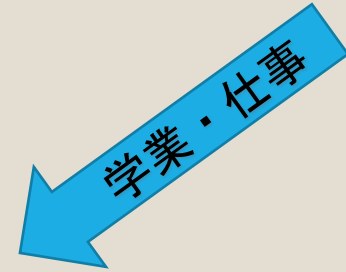
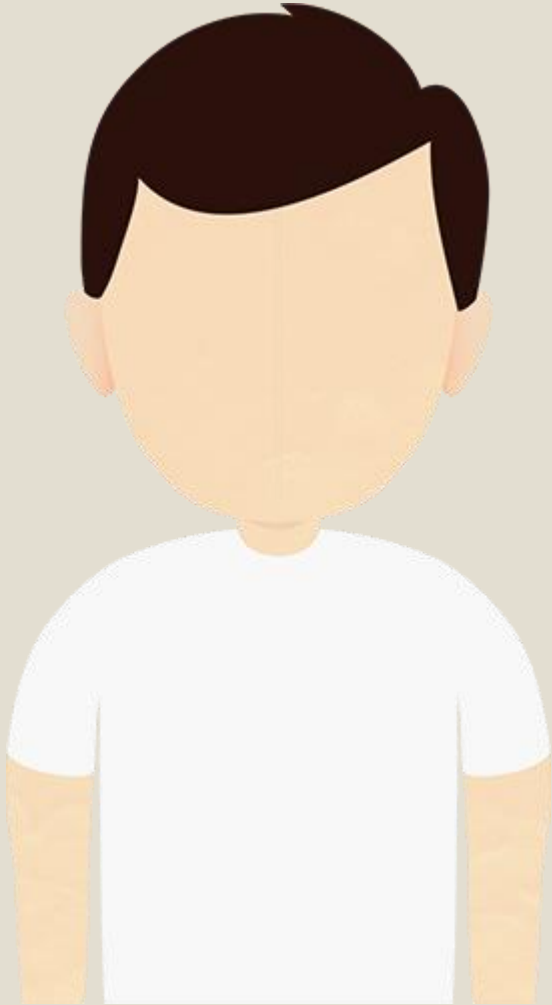
※詳細はUHとEWCの応募ページに記載されています

※提出される書類が日本語の場合は発行先機関又は翻訳事務所による翻訳も用意し原文と同封してください。



推薦状3部

英語の読書ができる方
3人必要（うち2人は学業・仕事について答える）



*推薦人には余裕を持って通知し、
下書きなどの事前準備をしてください

Submission Deadline: This letter must be received by Jan 10

Obuchi Student Scholarship
LETTER OF REFERENCE – ACADEMIC/PROFESSIONAL

We understand you have agreed to provide a reference letter for an individual who is applying for an Obuchi Student Scholarship. Thank you for your time and effort in supplying this additional information. This letter of reference will be considered as part of the application for the Obuchi Student Scholarship only.

The East-West Center strengthens understanding and relations between the people of the United States, Asia, and the Pacific through cooperative study, training, and research. The East-West Center is not a degree granting institution, but works in partnership with the University of Hawaii. The Obuchi Student Scholarship provides substantial funding for Master's and Doctoral graduate students from Okinawa to participate in educational and research programs at the East-West Center while pursuing graduate study at the University of Hawaii.

Upon completion, please upload the signed reference letter using the link provided in the email you received from the East-West Center on behalf of the applicant. Please note: You will only be able to upload a signed document. If you wish to include a separate letter, you may paste it to this document or merge it into one PDF file.

Notes:

- Letters of reference are strictly confidential, and the East-West Center will not release the contents of your letter to the applicant under any circumstances.
- The East-West Center might contact you to verify the authenticity of this letter. Therefore, please provide your valid work email address and telephone number.

Name and Title of Person Writing Recommendation: _____
Address: _____
Work Email: _____ Telephone Number: _____

Name of Applicant: _____

1. How long have you known the applicant?
2. How well and in what capacity do you know the applicant?

3. Please rate the applicant in terms of each of the following:

	Well Above Average	Above Average	Average	Below Average	Unable to Judge
Leadership	<input type="checkbox"/>	<input type="checkbox"/>	<input type="checkbox"/>	<input type="checkbox"/>	<input type="checkbox"/>
Initiative	<input type="checkbox"/>	<input type="checkbox"/>	<input type="checkbox"/>	<input type="checkbox"/>	<input type="checkbox"/>
Creativity	<input type="checkbox"/>	<input type="checkbox"/>	<input type="checkbox"/>	<input type="checkbox"/>	<input type="checkbox"/>
English language ease (if not native speaker of English)	<input type="checkbox"/>	<input type="checkbox"/>	<input type="checkbox"/>	<input type="checkbox"/>	<input type="checkbox"/>
Adaptability	<input type="checkbox"/>	<input type="checkbox"/>	<input type="checkbox"/>	<input type="checkbox"/>	<input type="checkbox"/>
Career potential	<input type="checkbox"/>	<input type="checkbox"/>	<input type="checkbox"/>	<input type="checkbox"/>	<input type="checkbox"/>
Intelligence	<input type="checkbox"/>	<input type="checkbox"/>	<input type="checkbox"/>	<input type="checkbox"/>	<input type="checkbox"/>
Readiness for advanced work	<input type="checkbox"/>	<input type="checkbox"/>	<input type="checkbox"/>	<input type="checkbox"/>	<input type="checkbox"/>
Self-expression	<input type="checkbox"/>	<input type="checkbox"/>	<input type="checkbox"/>	<input type="checkbox"/>	<input type="checkbox"/>
Ability to cope with personal crises	<input type="checkbox"/>	<input type="checkbox"/>	<input type="checkbox"/>	<input type="checkbox"/>	<input type="checkbox"/>
Ability to pursue independent study	<input type="checkbox"/>	<input type="checkbox"/>	<input type="checkbox"/>	<input type="checkbox"/>	<input type="checkbox"/>
Capacity for change	<input type="checkbox"/>	<input type="checkbox"/>	<input type="checkbox"/>	<input type="checkbox"/>	<input type="checkbox"/>
Motivation to pursue international education	<input type="checkbox"/>	<input type="checkbox"/>	<input type="checkbox"/>	<input type="checkbox"/>	<input type="checkbox"/>
Cross-cultural knowledge & experience	<input type="checkbox"/>	<input type="checkbox"/>	<input type="checkbox"/>	<input type="checkbox"/>	<input type="checkbox"/>
Cross-cultural sensitivity	<input type="checkbox"/>	<input type="checkbox"/>	<input type="checkbox"/>	<input type="checkbox"/>	<input type="checkbox"/>

Submission Deadline: This letter must be received by Jan 10

Obuchi Student Scholarship
LETTER OF REFERENCE – CIVIC ENGAGEMENT

We understand you have agreed to provide a reference letter for an individual who is applying for an Obuchi Student Scholarship. Thank you for your time and effort in supplying this additional information. This letter of reference will be considered as part of the application for the Obuchi Student Scholarship only.

The East-West Center strengthens understanding and relations between the people of the United States, Asia, and the Pacific through cooperative study, training, and research. The East-West Center is not a degree granting institution, but works in partnership with the University of Hawaii. The Obuchi Student Scholarship provides substantial funding for Master's and Doctoral graduate students from Okinawa to participate in educational and research programs at the East-West Center while pursuing graduate study at the University of Hawaii.

Upon completion, please upload the signed reference letter using the link provided in the email you received from the East-West Center on behalf of the applicant. Please note: You will only be able to upload a signed document. If you wish to include a separate letter, you may paste it to this document or merge it into one PDF file.

Notes:

- Letters of reference are strictly confidential, and the East-West Center will not release the contents of your letter to the applicant under any circumstances.
- The East-West Center might contact you to verify the authenticity of this letter. Therefore, please provide your valid work email address and telephone number.

Name and Title of Person Writing Recommendation: _____
Address: _____
Work Email: _____ Telephone Number: _____

Name of Applicant: _____

1. How long have you known the applicant?
2. How well and in what capacity do you know the applicant?

3. Please rate the applicant in terms of each of the following:

	Excellent	Well Above Average	Above Average	Average	Below Average	Unable to Judge
Leadership	<input type="checkbox"/>	<input type="checkbox"/>	<input type="checkbox"/>	<input type="checkbox"/>	<input type="checkbox"/>	<input type="checkbox"/>
Initiative	<input type="checkbox"/>	<input type="checkbox"/>	<input type="checkbox"/>	<input type="checkbox"/>	<input type="checkbox"/>	<input type="checkbox"/>
Creativity	<input type="checkbox"/>	<input type="checkbox"/>	<input type="checkbox"/>	<input type="checkbox"/>	<input type="checkbox"/>	<input type="checkbox"/>
Consideration/concern/care for others	<input type="checkbox"/>	<input type="checkbox"/>	<input type="checkbox"/>	<input type="checkbox"/>	<input type="checkbox"/>	<input type="checkbox"/>
Adaptability	<input type="checkbox"/>	<input type="checkbox"/>	<input type="checkbox"/>	<input type="checkbox"/>	<input type="checkbox"/>	<input type="checkbox"/>
Ability to help others with crises	<input type="checkbox"/>	<input type="checkbox"/>	<input type="checkbox"/>	<input type="checkbox"/>	<input type="checkbox"/>	<input type="checkbox"/>
Intelligence	<input type="checkbox"/>	<input type="checkbox"/>	<input type="checkbox"/>	<input type="checkbox"/>	<input type="checkbox"/>	<input type="checkbox"/>
Self-expression	<input type="checkbox"/>	<input type="checkbox"/>	<input type="checkbox"/>	<input type="checkbox"/>	<input type="checkbox"/>	<input type="checkbox"/>
Ability to cope with personal crises	<input type="checkbox"/>	<input type="checkbox"/>	<input type="checkbox"/>	<input type="checkbox"/>	<input type="checkbox"/>	<input type="checkbox"/>
Capacity for change	<input type="checkbox"/>	<input type="checkbox"/>	<input type="checkbox"/>	<input type="checkbox"/>	<input type="checkbox"/>	<input type="checkbox"/>
Cross-cultural knowledge & experience	<input type="checkbox"/>	<input type="checkbox"/>	<input type="checkbox"/>	<input type="checkbox"/>	<input type="checkbox"/>	<input type="checkbox"/>

メールなどの情報を入力し、後日3名にメール（推薦状とアップロード先のリンク）が届きます

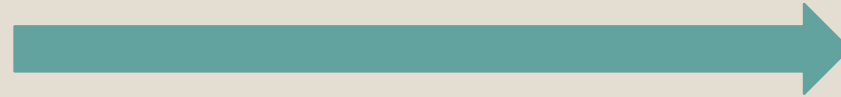
そのため余裕をもって応募項目を全て終了し、EWCに提出後、推薦状も1/10までに提出されていることをご確認ください（通知もあります）

選考・審査の流れ

4月

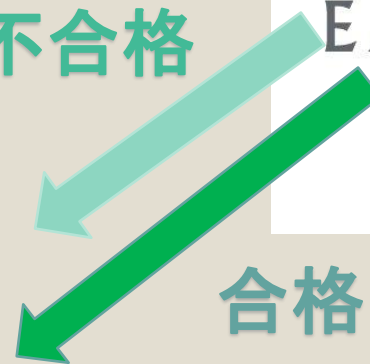


合格通知



EAST-WEST
CENTER

不合格



合格

EWC不合格の場合でも
ハワイ大学の入学資格有

※本プログラムを受けるには大学と東西センターの
両方合格していることが条件です